

Bill.Fischel@Dartmouth.edu
6 June 2008

Fischel, William A. 1989. "Did *Serrano* Cause Proposition 13?"
National Tax Journal 42: 465-474.

_____ 1996. "How *Serrano* Caused Proposition 13." *Journal of
Law and Politics* 12: 607-645.

_____ "Did John Serrano Vote for Proposition 13?" *UCLA Law
Review* 51:4 (April 2004): 887-932.

Martin, Isaac. 2006. "Does School Finance Litigation Cause
Taxpayer Revolt? *Serrano* and Proposition 13." *Law and
Society Review* 40: 525-557.

Stark, Kirk, and Jonathan Zasloff. 2003. "Tiebout and Tax Revolts:
Did *Serrano* Really Cause Proposition 13?" *UCLA Law
Review* 50: 801-858.

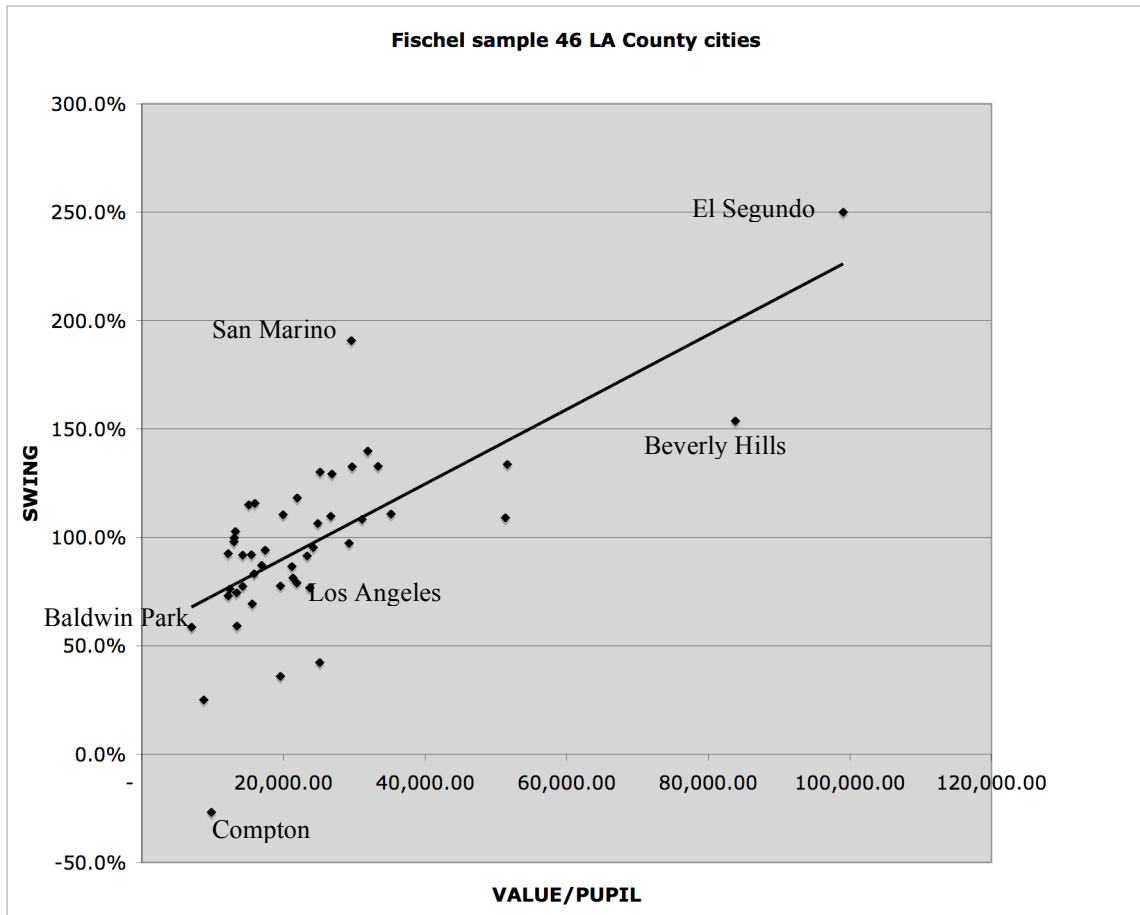
Bill.Fischel@Dartmouth.edu
6 June 2008

TABLE 1
PROPERTY-TAX INITIATIVE AND SCHOOL FINANCE CHRONOLOGY

November 5, 1968	“Watson I” initiative (Prop 9) to limit property taxes defeated: 32.0% yes; 68.0% no.
August 30, 1971	<i>Serrano I</i> decided (6-1) and remanded to Los Angeles Superior Court.
November 7, 1972	“Watson II” initiative (Prop 14) to limit property taxes defeated: 34.1% yes ; 65.9% no.
March 21, 1973	<i>San Antonio v. Rodriguez</i> decided by U.S. Supreme Court (5-4), denying <i>Serrano</i> -style equal protection claims at the federal level.
April 10, 1974	Judge Bernard Jefferson rules for <i>Serrano</i> plaintiffs in Los Angeles Superior Court; defendants appeal.
December 30, 1976	<i>Serrano II</i> decided in favor of plaintiffs (4-3), sustaining Judge Jefferson’s remedy.
September 2, 1977	AB 65, school finance bill intended to comply with <i>Serrano II</i> , passes legislature; property tax relief bill fails on same day.
December 29, 1977	“Jarvis” initiative (Prop 13) certified for the June 1978 ballot.
March 3, 1978	Governor signs “Behr Bill” (SB 1), alternative to Prop 13, tying its implementation to passage of Prop 8 , constitutional amendment allowing “split roll,” in which residential property could be taxed at a lower rate than other classifications.
June 6, 1978	Prop 13 passes: 64.8% yes ; 35.2% no; Prop 8 (and thus SB 1) defeated: 47.0% yes ; 53.0% no.

Bill.Fischel@Dartmouth.edu
6 June 2008

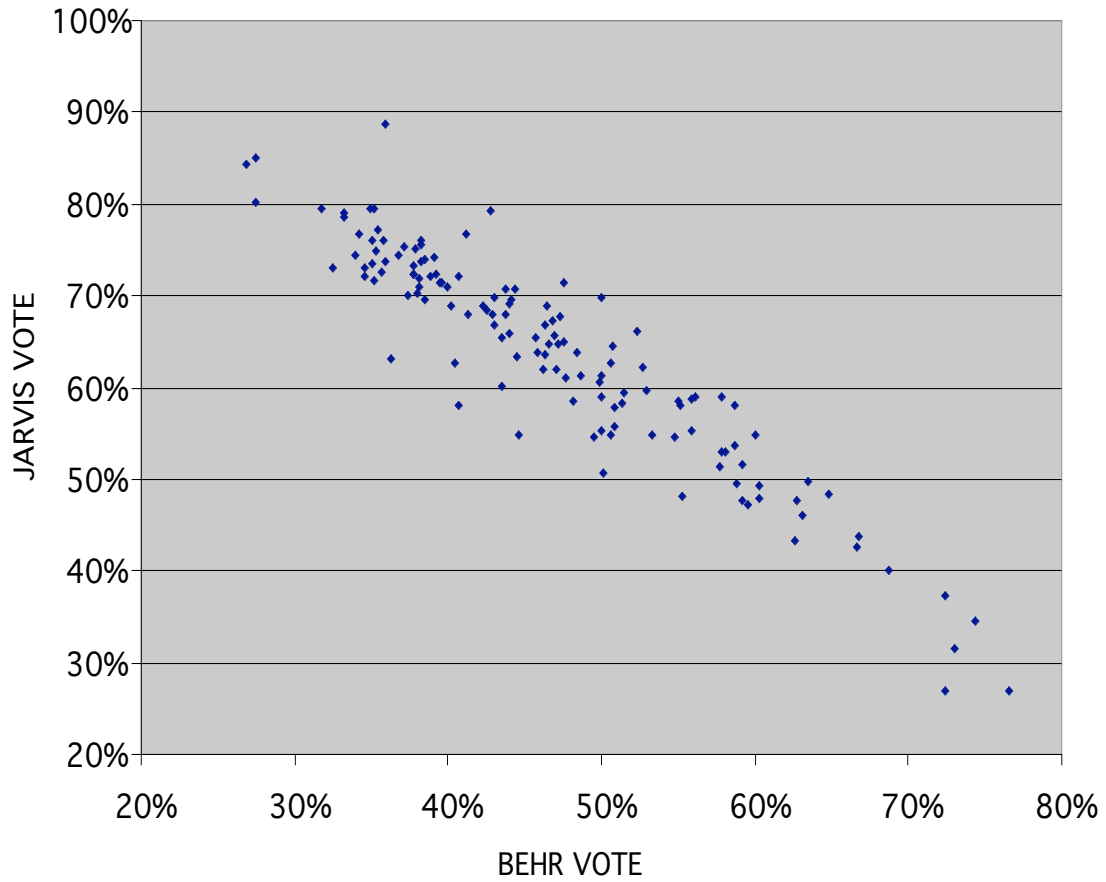
SWING and VALUE/PUPIL for 46-city Los Angeles County sample



(The simple correlation between SWING and VALUE/PUPIL is .72. If Beverly Hills and El Segundo are excluded, the correlation is .55.)

Bill.Fischel@Dartmouth.edu
6 June 2008

BEHR & JARVIS



Scatter diagram of percent of city votes for Behr (Prop 8) and for Jarvis (Prop 13) for Stark and Zasloff's 135-city sample.